

110mm Single Socket Pipe		
Code:	Length:	Price:
UG3	3m	<b>£11.12</b> + VAT
UG4	6m	<b>£21.56</b> + VAT



Coupler & Slip Coupler		
Code:	Length:	Price:
UG10		<b>£2.31</b> + VAT
UG12	Slip	<b>£3.34</b> + VAT



Single Socket Bends		
Code:	Angle:	Price:
UG28	15°	<b>£4.45</b> + VAT
UG26	30°	<b>£4.45</b> + VAT
UG24	45°	<b>£4.45</b> + VAT
UG22	90°	<b>£4.45</b> + VAT
UG29	90° Swept	<b>£6.45</b> + VAT
UG45	Rest Bend	<b>£10.74</b> + VAT



Double Socket Bends		
Code:	Angle:	Price:
UG20	15°	<b>£4.95</b> + VAT
UG18	30°	<b>£4.95</b> + VAT
UG16	45°	<b>£4.95</b> + VAT
UG14	90°	<b>£4.95</b> + VAT
UG21	90° Swept	<b>£6.95</b> + VAT
UG46	Rest Bend	<b>£10.92</b> + VAT



Double Socket Junctions		
Code:	Angle:	Price:
UG47	45°	<b>£6.35</b> + VAT
UG44	90°	<b>£6.25</b> + VAT



Triple Socket Junctions		
Code:	Angle:	Price:
UG38	45°	<b>£6.45</b> + VAT
UG39	90°	<b>£6.45</b> + VAT



Bottle Gullys		
Code:		Price:
UG101	Standard	<b>£13.78</b> + VAT
UG102	Rear Inlet	<b>£14.49</b> + VAT
UG106	Grid Only	<b>£3.92</b> + VAT
UG1006	Raising Peace	<b>£8.22</b> + VAT



Hoppers		
Code:		Price:
UG103	Square	<b>£9.16</b> + VAT
UG104	Rectangular	<b>£13.33</b> + VAT
UG105	Grid Only	<b>£4.94</b> + VAT



110mm P Trap	
Code:	Price:
UG100	<b>£13.78</b> + VAT



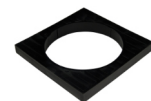
Rodding Access	
Code:	Price:
UG1012	<b>£14.34</b> + VAT



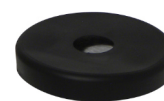
160 x 110mm Level Invert Reducer	
Code:	Price:
UG115	<b>£8.79</b> + VAT



110mm Socket Plug	
Code:	Price:
UG111	<b>£3.18</b> + VAT



Round to Square Grid Adaptor	
Code:	Price:
UG1008	<b>£7.06</b> + VAT



Rainwater Adaptor	
Code:	Price:
UG1010	<b>£9.88</b> + VAT



110mm Straight Rubber Coupler	
Code:	Price:
UG1011	<b>£9.86</b> + VAT



Plastic To Clay Adaptor	
Code:	Price:
UG1009	<b>£10.48</b> + VAT



45° Long Radius Bend	
Code:	Price:
UG15	<b>£21.01</b> + VAT



90° Long Radius Bend	
Code:	Price:
UG13	<b>£21.34</b> + VAT



Adjustable Bend (Double Socket)	
Code:	Price:
UG23	<b>£14.27</b> + VAT

# Inspection Chambers

320 Inspection Chamber

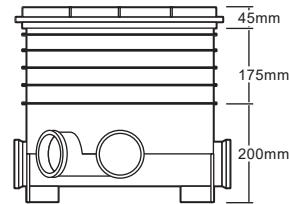
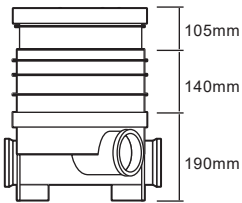
450 Inspection Chamber

1 x Main Entry  
2 x 45° Entries  
2 x Blanking Plugs  
Max. Depth 600mm  
All Sockets 110mm

1 x Main Entry  
2 x 90° Entries  
2 x 45° Entries  
4 x Blanking Plugs  
Max. Depth 1200mm  
All Sockets 110mm

BSEN1329; 1:2014

BSEN1329; 1:2014



Note: Dimensions shown denote the installed height of each item



320 Round Manhole Cover and Frame

Code: UG1000 Price: **£26.86 + VAT**



450 Round Manhole Cover and Frame

Code: UG1001 Price: **£30.23**



320 Square Lid Adaptor

Code: UG1013 Price: **£7.52 + VAT**



450 Square Manhole Cover and Frame

Code: UG2001 Price: **£38.75**



320 Square Manhole Cover and Frame

Code: UG2000 Price: **£27.12 + VAT**



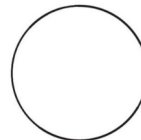
450 Raising Piece

Code: UG1003 Price: **£20.48**



320 Raising Piece

Code: UG1002 Price: **£13.91 + VAT**



450 Raising Seal

Code: UG1007 Price: **£3.11**



320 Manhole Base

Code: UG1004 Price: **£27.04 + VAT**



450 Manhole Base

Code: UG1005 Price: **£36.10**



450 Manhole Base (160mm Outlet)

Code: UG1014 Price: **£58.96**